

CORPORATE
PROFILE

**BRICKHOUSE
CONSTRUCTION
COMPANY LIMITED.**

26A, Fola Osibo Street,
Lekki Phase 1,
Lagos.
Phone :- 08097208586, 08097208587.
P.O Box 71189, Victoria Island, Lagos
brickhouse@brickhouse-ng.com
www.brickhouse-ng.com

September 2024

SPEED, QUALITY, ECONOMY.

Incorporated in 1989, Brickhouse Construction Company commenced active construction in March 1992 with a few renovation works. The company has since moved into full scale construction of buildings.

It has on its staff a crop of young dedicated well trained professionals and highly skilled tradesmen with several years of post qualification experience spanning a wide spectrum of the building industry.

Brickhouse is well equipped to handle various classes of building and civil construction works, including design and build projects.

We have also been involved in fast track office renovation and conversion works for ongoing concerns, which necessitated working night shifts, to enable clients carry out daily operations unhindered. Such clients include **Satellite television broadcast companies, banks, insurance companies, manufacturing industries, hospitals, educational institutions, hospitality (hotels) and entertainment industry.**

The company has also established a solid reputation and goodwill among other professionals in the building industry to enable it face expected challenges in the Nigerian business environment.

ODUNSI, OLASUBOMI BASHIR (MANAGING DIRECTOR)

INSTITUTIONS ATTENDED WITH DATES

| | |
|--|------|
| IGBOBI COLLEGE YABA LAGOS | 1978 |
| FEDERAL SCHOOL OF ARTS AND SCIENCE, VICTORIA ISLAND LAGOS | 1979 |
| UNIVERSITY OF IFE, (Now Obafemi Awolowo University, Ile-Ife) | 1985 |

AWARDS, ACADEMIC AND PROFESSIONAL QUALIFICATIONS WITH DATES

| | |
|--|------|
| B.Sc. (HONS) Building | 1985 |
| Member, Nigeria Institute of building (MNIQB) | |
| Merit Award winner (tagged International Recognition) | |
| Nigeria Institute of Building | 1997 |
| Member, Workshop Group 2 (for Associations by-laws Home Page and Administration) International Association For the professional Management of Construction (IAPMC) Conference, Washington D.C. U.S.A. | 1997 |
| Member, Council of Registered Builders of Nigeria (CORBON) | 2000 |

WILLIAMS, OLUSEGUN ABDULQUADRI (EXECUTIVE DIRECTOR)

INSTITUTIONS ATTENDED WITH DATES

| | |
|-------------------------------|------|
| GOVERNMENT COLLEGE OJO, LAGOS | 1981 |
| LAGOS STATE POLYTECHNIC | 1983 |
| UNIVERSITY OF LAGOS | 1990 |

AWARDS, ACADEMIC & PROFESSIONAL QUALIFICATIONS WITH DATES

| | |
|--|------|
| B.ES (Bachelor, Environment Studies) Lagos. | 1988 |
| Merit Award Winner in Commonwealth Nations Architectural Design & Structure competition, Malaysia, dubbed 'Sea Food Restaurant' | 1989 |
| B. Arch. | 1990 |
| Graduate Member, Nigeria Institute of Architects | 1990 |
| Graduate Member, Architects registration council of Nigeria | 1990 |

KEY STAFF

| | | | |
|-----|-------------------|---|----------|
| 1. | ODUNSI O.B.A | MANAGING DIRECTOR B.Sc. (HONS) BUILDING, MNIQB | 38 years |
| 2. | WILLIAMS O. A. Q. | EXECUTIVE DIRECTOR B.ES, B. ARCH (HONS) | 36 years |
| 3. | ODUMEWU. G. O. | PROJECT SUPERVISOR | 31 years |
| 4. | OWOLABI .T.O. | CHIEF QUANTITY SURVEYOR HND QUANTITY SURVEYING | 22 years |
| 5. | ASALU A. Z. | PROJECT QS (MONITORING) HND QTY. SURVEYING (MNIQS) | 21 years |
| 6. | DARAMOLA B. | SENIOR SITE QUANTITY SURVEYOR HND QUANTITY SURVEYING | 21 years |
| 7. | ADEDOKUN A.R. | PRINCIPAL PROJECT ARCHITECT HND (ARCHITECTURE) | 25 years |
| 8. | ABDULLAI A. Y. | HEAD TRANSPORT & LOGISTICS HND ACCOUNTING (ACA) | 19 years |
| 9. | AMAO S.O | CHIEF ACCOUNTANT HND ACCOUNTING (ACA) | 24 years |
| 10. | MATHEW I.V | HEAD, ADMINISTRATION B. Sc BUSINESS ADMINISTRATION | 25 years |



ON-GOING PROJECTS



ENTERPRISE DEVELOPMENT CENTER INNOVATION HUB AT PAN ATLANTIC UNIVERSITY, LEKKI - EPE EXPRESSWAY, IBEJU - LEKKI, LAGOS.



PRIVATE RESIDENTIAL DEVELOPMENT FOR NOBIUM LTD. AT PLOT H37A, BANANA ISLAND FORESHORE ESTATE, IKOYI, LAGOS.



RESIDENTIAL DEVELOPMENT AT ORAL ESTATE, IKOTA, LEKKI, LAGOS.



SPECIALIST CLASSROOM FACILITIES & STAFF ACCOMMODATION AT ST. SAVIOUR'S SCHOOL, IKOYI, LAGOS.



PROPOSED OGUN STATE POLYTECHNIC , IPOKIA , OGUN STATE.

A grayscale photograph of a stone wall, likely made of granite or a similar natural stone. The stones are arranged in a roughly rectangular pattern, with some larger, more prominent stones interspersed among smaller ones. The wall is set against a plain, light-colored background. A solid red horizontal banner is overlaid across the middle of the image, containing the text "EXECUTED PROJECTS" in white, bold, uppercase letters.

EXECUTED PROJECTS

COMMERCIAL / BANKING



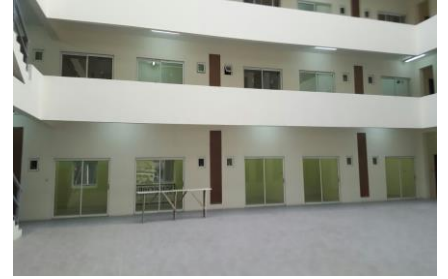
JEWEL AIDA EVENT CENTRE AT HAKEEM DICKSON ROAD, LEKKI, LAGOS.



THE INTERNATIONAL CONFERENCE CENTRE FOR UNIVERSITY OF IBADAN.



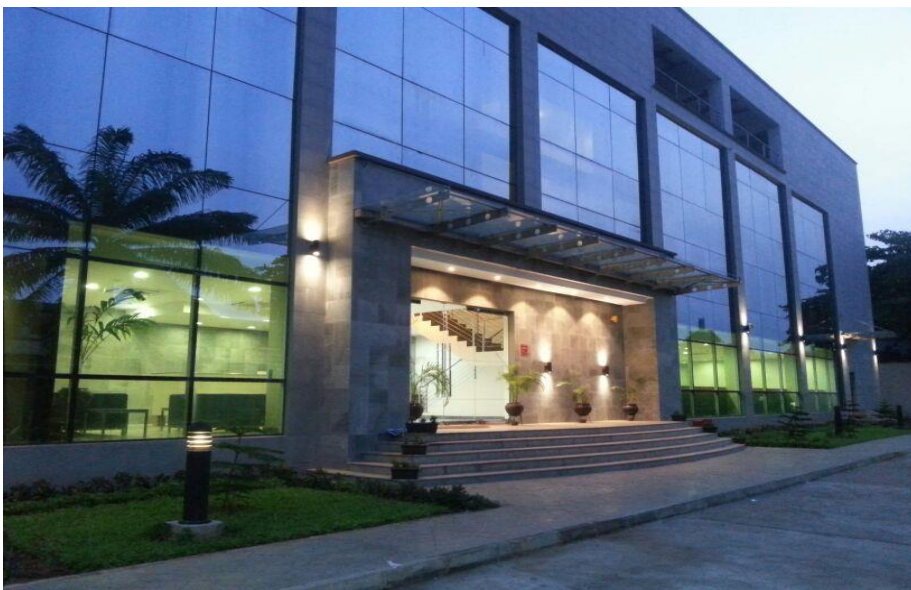
RENOVATION ON NIBSS HEAD OFFICE ON PLOT 1230 AHMADU BELLO WAY, VICTORIA ISLAND, LAGOS.



OMIDA MARKET BLOCK, ABEOKUTA, OGUN STATE.



DEVELOPMENT FOR DIAMOND BANK NIGERIA PLC. ELEGUSHI, LAGOS.



HEAD OFFICE DEVELOPMENT FOR CELESTIAL PROPERTIES LTD. AT OBA-AKRAN AVENUE, IKEJA, LAGOS.



SIMULATOR BUILDING FOR TRAINING & CONFERENCE CENTRE AT OGERE,
OGUN STATE.

HEALTHCARE



CLINIC REFURBISHMENT FOR VEDIC LIFECARE NIG. LTD. LEKKI PHASE 1, LAGOS.



HOSPITAL REFURBISHMENT FOR LAGOON HOSPITAL. AT APAPA, LAGOS STATE.



9-STOREY REDDINGTON HOSPITAL COMPLEX AT IDOWU MARTINS STREET, V-I, LAGOS.

HOSPITALITY



PROTEA HOTEL BY MARRIOTT IKEJA SELECT, IKEJA, LAGOS.



HOTEL DEVELOPMENT FOR MOORE HOUSE PROPERTIES AT LAGOS-EPE EXP. ROAD.



MARRIOTT HOTEL NOW L'EOLA HOTEL, MARYLAND LAGOS.

INSTITUTIONAL



INFRASTRUCTURAL MANAGEMENT RESEARCH CENTRE IN LAGOS BUSINESS SCHOOL AT SANGOTEDO, AJAH, LAGOS.

OIL & GAS



UPGRADED (TRADE-FAIR) OANDO SERVICE STATION ALONG LAGOS-BADAGRY EXPRESSWAY.



HEAD OFFICE DEVELOPMENT FOR OANDO MARKETING PLC AT APAPA, LAGOS.



UPGRADED OANDO SERVICE STATION AT AWOLOWO ROAD, IKOYI, LAGOS.

RELIGIOUS

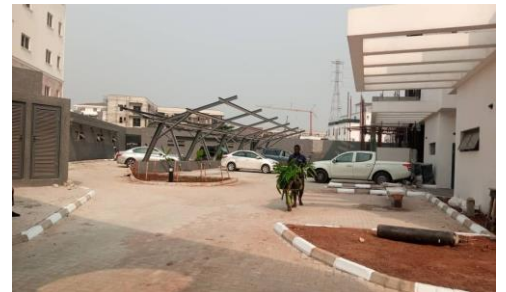
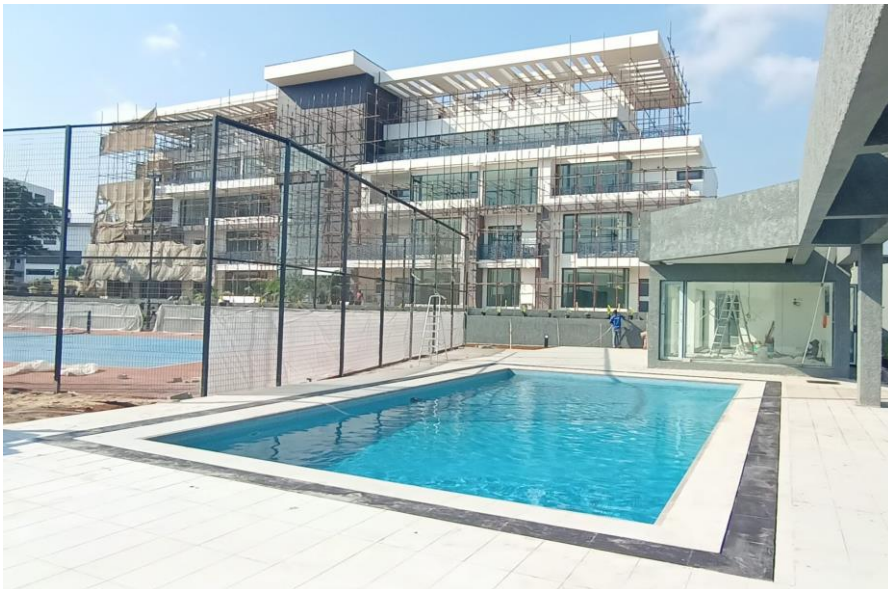


ISLAMIC COMMUNITY MOSQUE AT VICTORIA GARDEN CITY, LAGOS

RESIDENTIAL



RESIDENTIAL DEVELOPMENT FOR OHO INVESTMENTS AT PLOT R-7 3RD AVENUE, BANANA ISLAND, FORESHORE ESTATE, IKOYI, LAGOS.



RESIDENTIAL DEVELOPMENT AT BANANA ISLAND, FORESHORE ESTATE, IKOYI, LAGOS.



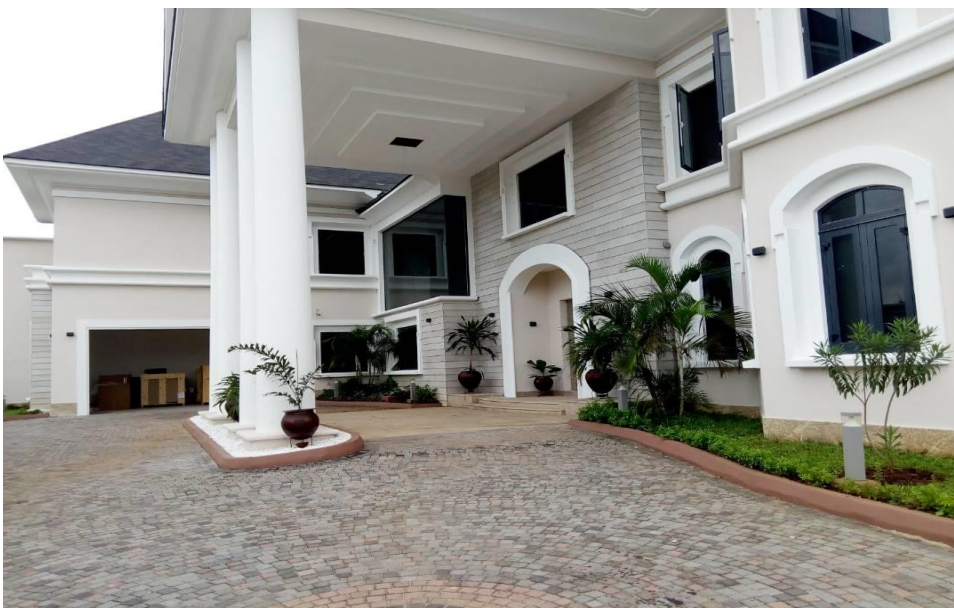
TERRACE HOUSES DEVELOPMENT AT PLOT 1 BLOCK 7 LEKKI PENINSULA AVENUE, LEKKI, LAGOS STATE.



RESIDENTIAL DEVELOPMENT AT PLOT 127B OBA ALADEJOBI STREET, GRA IKEJA, LAGOS.



RESIDENTIAL DEVELOPMENT ON PLOT 841, FESTIVAL ROAD, VICTORIA ISLAND . LAGOS.



RESIDENTIAL DEVELOPMENT ON PLOT J-12 BANANA ISLAND.



RESIDENTIAL DEVELOPMENT AT MAC-DONALD ROAD, IKOYI, LAGOS.



RESIDENTIAL DEVELOPMENT ON PLOT A 15(B) AT BANANA ISLAND, IKOYI, LAGOS.



RESIDENTIAL DEVELOPMENT ON PLOT 2 BLOCK 25, LEKKI PHASE 1



RESIDENTIAL DEVELOPMENT AT PLOT 38, ROAD 57, VGC, LAGOS.



COMPLETION OF MAMBILLA ESTATE, OSBORNE FORESHORE, IKOYI, LAGOS



RESIDENTIAL DEVELOPMENT AT PARKVIEW ESTATE, IKOYI, LAGOS.



RESIDENTIAL DEVELOPMENT AT PARKVIEW ESTATE, IKOYI, LAGOS.



4-UNITS TOWNHOUSES AT ABIOLA CLOSE, MARYLAND, LAGOS.



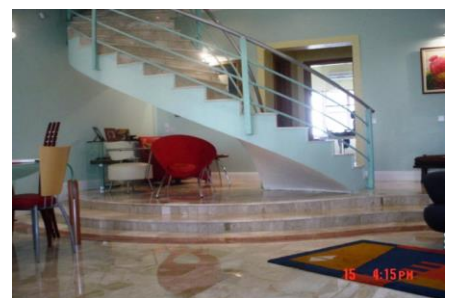
LUXURY APARTMENTS AT LEKKI PHASE 1, LAGOS.



LUXURY FLATS FOR FBN PLC. AT 10, MURTALA MUHAMMED DRIVE, IKOYI, LAGOS.



RESIDENTIAL DEVELOPMENT AT GEORGE STREET, IKOYI, LAGOS.



PRIVATE RESIDENTIAL DEVELOPMENT AT VICTORIA GARDEN CITY.



PRIVATE RESIDENCE AT S.W. IKOYI.

RETAILING



PORSCHE SHOWROOM AT AKIN ADESOLA, V-ISLAND, LAGOS.

OTHERS

FUEL DUMP AT TERMINAL 2, APAPA,
FOR OANDO MARKETING PLC.

DEVELOPMENT FOR FOOD
CONCEPTS LTD. AT AWOLOWO
ROAD, IKOYI.

BEST WESTERN IKEJA HOTEL AT
ALLEN AVENUE, IKEJA, LAGOS.

IGBOGBO IIB HOUSING ESTATE AT
IGBOGBO, IKORODU, LAGOS.

OFFICE BLOCK FOR SAHARA
ENERGY AT 7, FOWLER R.D., IKOYI.

RESIDENTIAL BUILDING AT VGC.
WATER FRONT.

RESIDENTIAL DEVELOPMENT AT
VGC. FOR 20-GEE LTD.

RESIDENTIAL DEVELOPMENT AT 3,
GEORGE STREET, IKOYI, LAGOS.

FORILLON TRANS-ATLANTIC LTD.'S
RESIDENTIAL DEVELOPMENT AT
BANANA ISLAND, IKOYI, LAGOS.

GILGAL PROPERTIES RESIDENTIAL
DEVELOPMENT AT LEKKI PENINSULA,
SCHEME 1, LAGOS

SHOPPING COMPLEX FOR
WOOLWORTH LTD. ADEOLA
ODEKU STREET, VICTORIA
ISLAND, LAGOS PHASE I.

RESIDENTIAL DEVELOPMENT
(JOINT VENTURE)

PRIVATE RESIDENTIAL
DEVELOPMENT AT LEKKI PHASE II

OFFICE DEVELOPMENT AT
VICTORIA-ISLAND LAGOS.

OFFICE BUILDING FOR
MULTICHOICE NIGERIA.

FAST FOOD RESTURANT AT
VICTORIA-ISLAND, LAGOS.

OFFICE RENOVATION /FIT OUT FOR
OANDO PLC. STALLION HOUSE (8TH,
9TH & 10TH FLOORS)

REFURBISHMENT OF ECONET SHOP AT
SANUSI FAFUNWA, V-I. LAGOS.

OFFICE BUILDING AT AMUWO ODOFIN

REMODELLING OF PRIVATE RESIDENCE
AT MOBOLAJI JOHNSON PLACE, LEKKI

FACTORY BUILDING AT ONITSHA

PRIVATE RESIDENCE AT ABDUL
STREET, OGUDU, LAGOS

BANKING HALL CONVERSION AT
AMODU OJIKUTU STREET
VICTORIA ISLAND.

PRIVATE RESIDENCE AT BALARABE
MUSA CRESCENT, VICTORIA
ISLAND

OFFICE BUILDING ANNEX
ON WESTERN AVENUE, SURULERE

PRIVATE RESIDENCE AT LEKKI

OFFICE REMODELLING AT TIAMIYU
SAVAGE, VICTORIA-ISLAND

REMODELLING WORKS AT
AGUNGI VILLAGE

PRIVATE RESIDENCE AT
MARYLAND.

PLANTS, TOOLS & EQUIPMENT

1. BATCHING PLANT
2. TOWER CRANES
3. ELECTRIC HOISTING EQUIPMENT S
4. EXCAVATOR & BACK-HOE MACHINE
5. RAMMERS / COMPACTORS / ROLLERS
6. PAY LOADER
7. DUMPER
8. TIPPERS AND TRAILERS
9. PICKUPS AND FLAT BED TRUCKS
10. BRANDED GENERATORS
11. LEVELLING INSTRUMENTS
12. CONCRETE MIXERS
13. ELECTRIC STEEL CUTTING MACHINES
14. STEEL BENDING MACHINES
15. WOOD PLANING MACHINES
16. TABLE SAWING MACHINES
17. WOOD CIRCULAR MACHINES
18. JIG-SAWS
19. CUTTING AND GRINDING MACHINES
20. WATER PUMPS
21. CONCRETE VIBRATORS
22. JACK-HAMMERS
23. BLOCK MOULDING MACHINES
24. PROPRIETRY FORMWORK
25. SCAFFOLDING

Any other equipment required will be hired or bought if necessary.